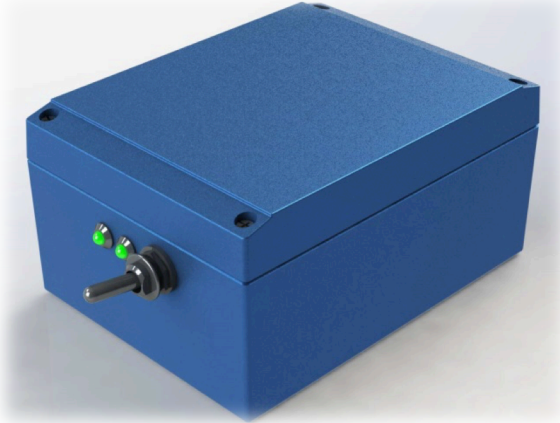


Applied Automation & Controls Inc

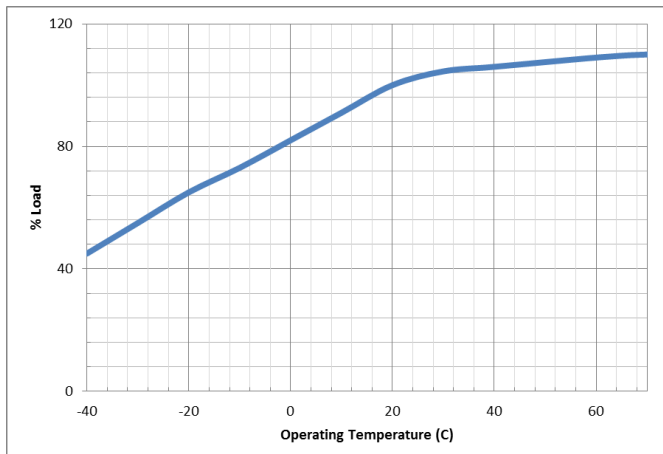
DC UPS Power Supply



The Applied Automation & Controls DC-UPS Power Supplies Units are RoHS compliant self-contained modular uninterruptable power supplies. All modules in this series are RoHS compliant and CE marked.

Other features include spring clamp wire terminals, LEDs for power input and backup operation indication.

Power Derating:



Technical Specifications:

Part numbers & Power Rating:

00-92501 24V Output 100W

Environmental Specifications:

Operating Temperature: -40C to 70C
Storage Temperature: -40C to 125C
Thermal Shutdown: 110C
Relative Humidity: To 95%

General Specifications:

Efficiency: 91%
MTBF (MIL-HDBK-217F): 380kHrs
Indicators: LED x 2
Surge Protection: Input & Output TVS
Serialization: Each unit Serialized
Dimensions: 160x120x82mm
Mounting Holes: 145x83mm (M4)

Input Output Specifications:

Input Voltage: 9-36VDC, 24V Nom
Output Voltage: 24V DC Nominal
Current Limit: 110% of Nominal
Fuse Limit: 5Amp
Power Rating: 100W
Switch Frequency: 350kHz
Output Ripple: < 0.5% pk-pk

